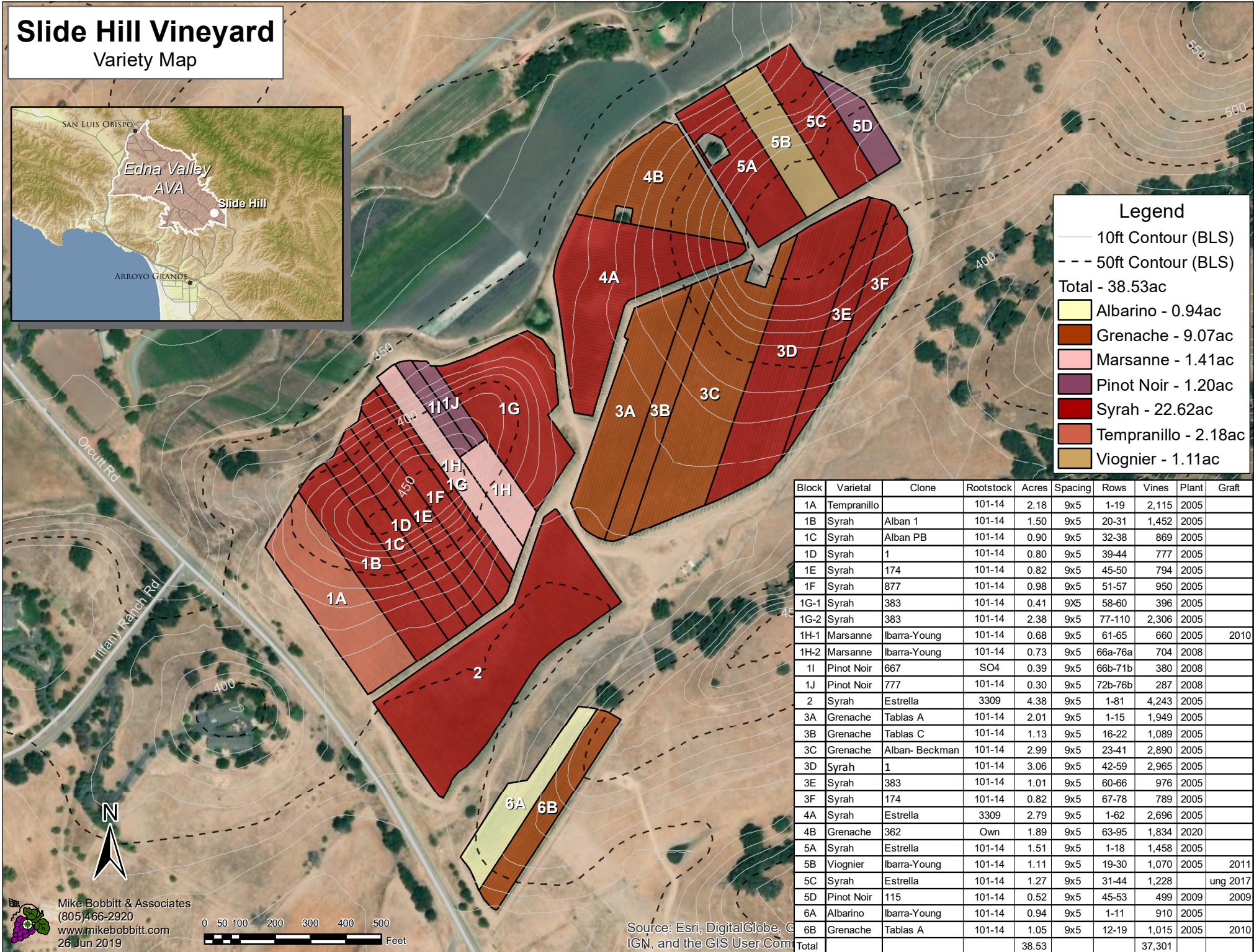


# Slide Hill Vineyard Variety Map



Legend	
—	10ft Contour (BLS)
- - -	50ft Contour (BLS)
Total - 38.53ac	
<span style="background-color: #ffffcc; border: 1px solid black; display: inline-block; width: 15px; height: 10px;"></span>	Albarino - 0.94ac
<span style="background-color: #8b4513; border: 1px solid black; display: inline-block; width: 15px; height: 10px;"></span>	Grenache - 9.07ac
<span style="background-color: #f08080; border: 1px solid black; display: inline-block; width: 15px; height: 10px;"></span>	Marsanne - 1.41ac
<span style="background-color: #800000; border: 1px solid black; display: inline-block; width: 15px; height: 10px;"></span>	Pinot Noir - 1.20ac
<span style="background-color: #c00000; border: 1px solid black; display: inline-block; width: 15px; height: 10px;"></span>	Syrah - 22.62ac
<span style="background-color: #e9967a; border: 1px solid black; display: inline-block; width: 15px; height: 10px;"></span>	Tempranillo - 2.18ac
<span style="background-color: #d2b48c; border: 1px solid black; display: inline-block; width: 15px; height: 10px;"></span>	Viognier - 1.11ac

Block	Varietal	Clone	Rootstock	Acres	Spacing	Rows	Vines	Plant	Graft
1A	Tempranillo		101-14	2.18	9x5	1-19	2,115	2005	
1B	Syrah	Alban 1	101-14	1.50	9x5	20-31	1,452	2005	
1C	Syrah	Alban PB	101-14	0.90	9x5	32-38	869	2005	
1D	Syrah	1	101-14	0.80	9x5	39-44	777	2005	
1E	Syrah	174	101-14	0.82	9x5	45-50	794	2005	
1F	Syrah	877	101-14	0.98	9x5	51-57	950	2005	
1G-1	Syrah	383	101-14	0.41	9x5	58-60	396	2005	
1G-2	Syrah	383	101-14	2.38	9x5	77-110	2,306	2005	
1H-1	Marsanne	Ibarra-Young	101-14	0.68	9x5	61-65	660	2005	2010
1H-2	Marsanne	Ibarra-Young	101-14	0.73	9x5	66a-76a	704	2008	
1I	Pinot Noir	667	SO4	0.39	9x5	66b-71b	380	2008	
1J	Pinot Noir	777	101-14	0.30	9x5	72b-76b	287	2008	
2	Syrah	Estrella	3309	4.38	9x5	1-81	4,243	2005	
3A	Grenache	Tablas A	101-14	2.01	9x5	1-15	1,949	2005	
3B	Grenache	Tablas C	101-14	1.13	9x5	16-22	1,089	2005	
3C	Grenache	Alban- Beckman	101-14	2.99	9x5	23-41	2,890	2005	
3D	Syrah	1	101-14	3.06	9x5	42-59	2,965	2005	
3E	Syrah	383	101-14	1.01	9x5	60-66	976	2005	
3F	Syrah	174	101-14	0.82	9x5	67-78	789	2005	
4A	Syrah	Estrella	3309	2.79	9x5	1-62	2,696	2005	
4B	Grenache	362	Own	1.89	9x5	63-95	1,834	2020	
5A	Syrah	Estrella	101-14	1.51	9x5	1-18	1,458	2005	
5B	Viognier	Ibarra-Young	101-14	1.11	9x5	19-30	1,070	2005	2011
5C	Syrah	Estrella	101-14	1.27	9x5	31-44	1,228		ung 2017
5D	Pinot Noir	115	101-14	0.52	9x5	45-53	499	2009	2009
6A	Albarino	Ibarra-Young	101-14	0.94	9x5	1-11	910	2005	
6B	Grenache	Tablas A	101-14	1.05	9x5	12-19	1,015	2005	2010
<b>Total</b>				<b>38.53</b>			<b>37,301</b>		

Mike Bobbitt & Associates  
 (805)466-2920  
 www.mikebobbitt.com  
 26 Jun 2019



Source: Esri, DigitalGlobe, IGN, and the GIS User Community

Disclaimer: The information herein was compiled from multiple publicly available sources, is considered reliable and the most current available; it is, however, provided without warranty, either express or implied. No liability is assumed either directly or indirectly. Contact a licensed Land Surveyor for any questions regarding legal property boundaries